

DisleyNEWS

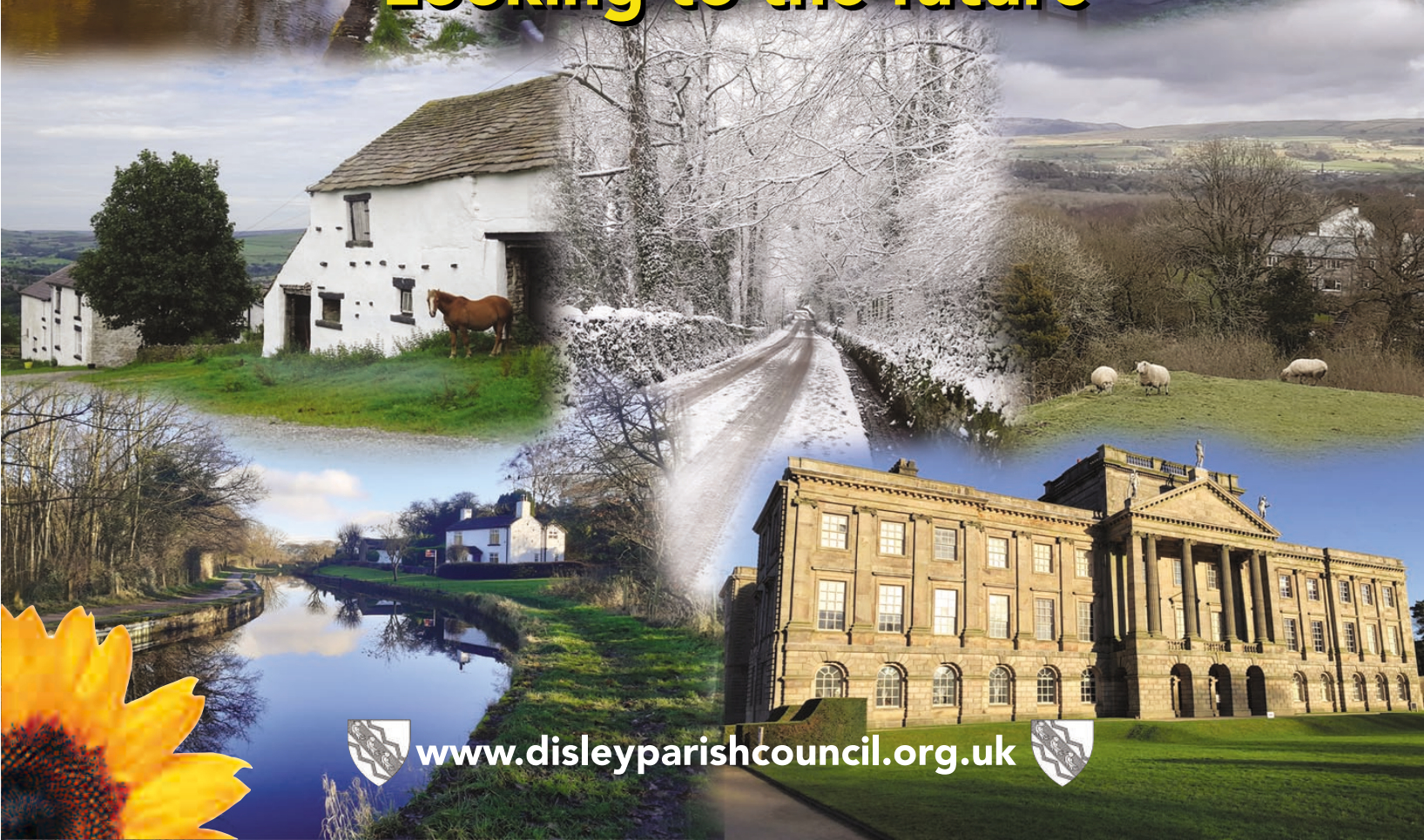
DISLEY PARISH COUNCIL NEWSLETTER

SUMMER 2021 EDITION



Disley & Newtown

Looking to the future



www.disleyparishcouncil.org.uk



Heartfelt thanks from your Community

Each year Disley Parish Council presents awards to people from the village to recognise the valued contribution that they have made to the community in Disley and Newtown. These local heroes are nominated by residents of the village who they feel deserve public recognition for the efforts they have made.

In 2020, it was heart-warming to see so many people showing their community spirit in so many different ways and going the extra mile to help their neighbours and fellow villagers throughout lockdown. This generosity was reflected by the large number of civic award nominations received.

Whilst Covid prevented the awards from being presented in person this year, they were hand delivered to the recipients with thanks from the village for all their hard work.

Recipients of the awards were Lisa Ashwood for her contribution to 1st Disley Cubs, Louise Dandy for her work with 1st Disley Beavers and 1st Disley Cubs and Ella Kalnins for her involvement as a young leader with 1st Disley Beavers. Zoe Lofthouse received an award for entertaining the residents of Disley & Newtown during lockdown and for her many fundraising activities. An award was also made to Helen Martin for her valued and varied contributions to the Disley & Newtown Community.

As well as these individual awards, Civic Commendation letters were presented to two local businesses for their contribution to the local community particularly at the height of the pandemic. On behalf of the village, the Parish Council thanks all of them for their valued contribution to our community.



Helen Martin



Ella Kalnins



En'choir'ies Community Choir News

Disley Community Choir continues to rehearse online and its weekly newsletter, which keeps members up to date with each other, has now been produced for just over a year. To celebrate this milestone, a special Easter themed rehearsal saw members displaying Easter Bonnets and enjoying an Easter themed quiz, together with a selection of specially chosen songs.

A variety of new music has been added to choir's repertoire recently in preparation for any future events they may be involved with, once the current restrictions are lifted. The Musical Director has also been working to create several pieces of music to commemorate the period of lockdown, incorporating lyrics produced by several choir members. The choir is very much looking forward to meeting up and performing again in the near future.

New members are always welcome and for further information please phone: 01663 765454 or 01663 764384.



Cooper Sons Hartley & Williams LLP

Like all of us, Cooper Sons Hartley & Williams LLP could not have imagined what lay ahead when they merged, in January 2020, with long-standing Disley firm Wood's Solicitors. But having adapted to the challenges presented by the pandemic, partner Jo Twemlow is feeling positive: "Covid 19 has tested us all in different ways. Our business has been fortunate as we have continued working during the lockdowns, ensuring that clients requiring legal advice and support have been able to access those services without interruption. Hopefully, we can soon open our doors fully again - being able to meet with our clients face to face is something we really value."

A mention must be made of the retirement, in June 2020, of Richard Earland who came to Disley back in 1995 to run Wood's Solicitors. Richard has continued practising part time as a consultant with Cooper Sons Hartley & Williams LLP. Very best wishes go to him for a long, happy and certainly well-earned retirement.

Last, but by no means least, the Disley office is delighted to introduce the firm's newest recruit, Joe O'Connor. Joe is a highly experienced commercial and residential property solicitor and joined the firm just before Christmas 2020 and has this to say: "Disley is a lively, busy community and I am excited to be here. My work is varied and stimulating - who could ask for more!"



DISLEY BACK IN BUSINESS

The Parish Council is delighted to see so many of our local shops and businesses reopening after the lockdown and we hope that residents will continue to support their valuable contribution to the village. Our local businesses are vital to the vibrancy of the village and they need our support whenever possible. The following businesses have provided their post-Covid opening arrangements:

Disley Barbers

Re-opened on 21st April 2021
Mon - Fri 09:30 - 18:00;
Sat 09:00 - 17:00

Disley Village Bakery

Remained open throughout.
Mon - Sat 07:30 - 15:00
They are operating a One-in/One-out policy so your patience would be appreciated. Face covering compulsory.

Finch and Fig

Remained open throughout for takeaways
Wed - Sat 09:00 - 14:00
Aiming to open on 17th May 2021 for sit-in - they will publish details nearer the time.

Jane Leigh Creations

Re-opened 17th April 2021
Saturdays 12:00 - 15:00
Maximum 2 people or 1 family group at a time.

Stefan James

Re-opened 12th April 2021
Tue - Fri 09:00 - 17:00;
Late Night Thursday;
Sat - 09:00 - 15:00
Booking preferred, maximum 3 people in salon at any time.

Many of the other local businesses are also open and we hope that, with the support of the community, they will all continue to thrive.

Best foot forward



Signs of spring, an easing of Lockdown - and Disley Footpaths Society (DFS) is back in action!

Footpaths across Disley and Newtown have all taken a hammering over the winter, and maintenance is now the Society's first priority. Steve Brown and his volunteers have been working miracles, doing minor individual repairs, but in mid-April the first full work party began the task of improving the surface of FP 63 - the muddy stretch below the golf course before it joins the towpath. Gravel was laid down over lengths of membrane to aid resilience and stability as shown in the photos.

The first day back on the towpath was spent re-surfacing stretches either side of the swing bridge at Higgins Clough. This is just a start -. DFS is in for a busy summer!

The popular DFS walks programme also re-started with the annual Bluebell Walk on 24th April. Five further walks are planned across the summer and autumn months although for the present, while pandemic restrictions still apply, these are restricted to members only. If you are interested in becoming a member, you will be very welcome. Simply email Jean Windsor at jeanwinds25@gmail.com for details.

CARE AT HOME

How many care providers does it take to get you back on your feet and pottering around your garden this Summer?
Just the right one!

Home Instead
SENIOR CARE

To us, it's personal.

When it comes to Senior Care, experience counts. That's why many families count on Home Instead. We pride ourselves in offering outstanding care. Care that you can depend on in your time of need and only find at Home Instead.

Call Christine to arrange an initial chat over a coffee and discover an outstanding service that may just be your cup of tea!

www.homeinstead.co.uk/highpeak
email: chris.blain@homeinstead.co.uk

Home Instead Senior Care
95 Buxton Road, High Lane, Stockport SK6 8DX

Each Home Instead Senior Care franchise is independently owned and operated

**Also Recruiting
Caregivers Now**

01663 765510



Local history in the making

Although it has been over 12 months since Disley Local History Society has met due to restrictions on gatherings, members have been kept in touch through the medium of a newsletter that has been issued about every 6 to 8 weeks. Members have been encouraged to record their experiences during the various lockdowns, so that future generations of Disley residents and historians have details about the effect of the pandemic on local people.

With the gradual easing of lockdown, it is hoped that by September the Society will be able to resume its regular monthly meetings. At present no speakers have been arranged because of the uncertainty of the situation. If indoor meetings are allowed by the autumn, they will hopefully take place on Thursday 16th September, 21st October and 18th November at 7.30pm in the Community Centre. Details of the speakers will be made available nearer the time. The plan is to include updates on the Disley Parish Council website as discussions are underway to update the Local History page with the society's current newsletter.

For further information please contact the chairman, Barbara Roberts at barbara@ashwood11.plus.com or Chris Makepeace at chris@makepeaceonline.co.uk

School's In!

Disley Primary has had an eventful Spring Term. Whilst the school remained open to children of Key Workers during Lockdown 3, they were delighted to open their doors once again on 8th March. Disley Primary is incredibly proud of how its children have adapted and coped working in bubbles and with a more Covid-friendly, socially distanced structure.

In March, the whole school had an Empathy week. As part of the work undertaken during this week some of the children made kindness posters and, wanting to share their kindness with the local community, they displayed the posters around the village. The children hope that people have enjoyed looking at the posters and felt a little boost for the day. Although social events cannot be held in school at the moment, the children wanted to do something nice for others at Easter that linked to their chosen charity work. Children brought in lots of Easter eggs which were donated to the Oasis Centre and distributed to those in need. The Oasis Centre were overwhelmed and very thankful for the wonderful donations. Now that the Summer term is here and the weather should be improving, the children are being encouraged to be outdoors as much as possible. One way that the school has been working on this is taking part in the Sustrans Big Pedal event whereby, ideally, the children will cycle, walk or scoot to and from school for a week. Dame Sarah Storey is also being welcomed into school to have outdoor talks with each bubble, touching on the alternatives to travelling by car and the environmental impact and the benefits of getting active.



Disley Power Rangers



The Parish Council's Handyman Service continued to maintain and improve the village's appearance and look after the Council's assets throughout 2020. However, later in the year, one of handymen retired and the other moved on to pastures new. Disley Parish Council would like to thank both handymen, Colin Eckersley

and Dan Hodgkiss, for their fantastic contribution to the village over many years of service and wishes them all the best for the future. These changes led councillors to review the way this vital service operates across the village and, as part of an exciting new initiative, two Disley Parish Rangers were appointed to fill brand new roles.

One ranger mainly covers the village centre, ensuring that it is a clean and pleasant environment, while the other ranger maintains the parks and council assets such as the plat areas, allotments, bus shelters etc. They both work together on larger projects where required.

The Village Centre Ranger is Steve Taylor, who many people might recognise from his previous role as the Community Centre caretaker. The Parks & Assets Ranger is Stephen Carter who has lived and worked in the village for many years.

The Parish Council is delighted to welcome both rangers, who have already made a really positive impact within the Disley & Newtown community. You can follow the projects the Rangers have been working on via #DisleyRangers on the Parish Council Twitter and Facebook pages.



Getting to the business end of things



Since the start of the pandemic, the Disley Business Group, aka Disley Traders, has moved online and onto Facebook where they have welcomed several new businesses and shared the latest business news, including details of government business support. The Facebook page can be found at:

www.facebook.com/groups/disleytraders

As local businesses start to emerge from COVID restrictions, the Disley Traders group is looking to partner with Disley Parish Council and explore local events and other activities. Ideas already put forward include a local business directory and a village discount/charity scheme.

The group is open to all businesses and the is particularly keen to hear from tradespeople, home-based businesses and professional services providers.

Please join the Facebook group to contribute to the discussion and learn more, including details of the next meeting.

Hopefully, it will not be long before the traders can meet up in person for a proper business catch-up.

All change at Disley Station

Since the recent gradual easing of lockdown, Friends of Disley Station, aka FODS, has been busy starting to transform the steep slope at the station. A path has been created, making use of the membrane and gravel that was starting to slide down the slope.

Low growing conifers, shrubs and plants, which have been generously donated by local residents, have been planted to give the whole area a much-needed lift.

The 'before and after' photos, show what a difference FODS' efforts have made.

The Friends' long-term plan for the slope, which was previously overgrown with dock and ground elder, is to terrace the steepest part of the slope to make gardening easier. Bulbs will be planted in the autumn along with more plants, shrubs and wildflower seeds.

FODS would be very grateful for any donations of aromatic herbs plus perennial plants or cuttings (that are not too invasive) which residents are dividing or willing to donate.

If you are interested in volunteering with FODS, to get some fresh air and exercise while transforming the station, you would be most welcome.

To arrange collection of plants or for more details about FODS, please contact Jean Windsor, FODS Treasurer and Secretary by email at: jean.windsor@disleyparishcouncil.org.uk

The Sootman



**Fully qualified, Disley-based
chimney and flue sweeping service**

Friendly and reliable

Contact Simon on 01663 741513

or 07939 931977



*Phone Simon to give
your chimney a
clean sweep!*



Help to clear the mind

by Hannah McGill

It is safe to say that not everyone clears their mind in the same way. Some people may find it relaxing to go shopping, others may prefer a nice walk. With life being so unpredictable and challenging at the moment, it is important to manage your mental health and get help when it is needed. A couple of local places immediately spring to mind as locations to find some relaxation.

Lyme is an obvious choice, the walks around the park are so beautiful and it is a perfect place to sit and read a book. If you prefer, you can go and look for the red deer which is an ideal distraction from the rest of the world.

The Peak Forest Canal is a very relaxing place, why not take a nice stroll, or bike ride down to New Mills? Or you could sit on a bench and look at the water, calming down your mind.

Whatever you decide to do, do what suits you and your mental health. But don't be afraid to reach out for help if you feel you are struggling. The below organisations all offer support:

Samaritans: Call 116 123 or email jo@samaritans.org

Togetherall: Visit <https://together.com/en-gb>. (perfect for students)

Mind: Call 0300 123 3393 or visit www.mind.org.uk

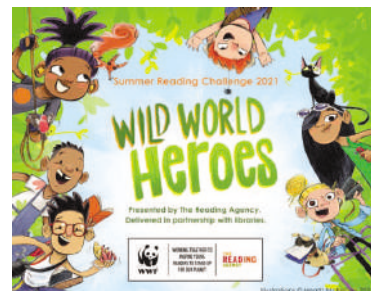
(Hannah McGill is a Disley student who is studying Multi-media Journalism at Manchester Metropolitan University. Alongside her studies, Hannah has also recently started a social media management business).



Good News

Disley Library is open!

This summer, Disley Library will be running the popular Summer Reading Challenge 2021 in person at the library and online too. The theme is Wild World Heroes, so get ready for a nature-themed challenge to inspire you to stand up for the planet!



Visitors can go green and cycle to the Library and use the new bike racks by the entrance.

The Library opening hours have been reduced slightly to allow for additional Covid cleaning. The new times are:

- Tuesday 9.00am - 12.30pm
- Wednesday 9.00am - 12.30pm
- Thursday 2.00pm - 5.30pm
- Friday 2.00pm - 5.30pm
- Saturday 9.00am - 12.30pm

Please bring your library card so that books can be issued through the self-service. You are now able to reserve books either online or by calling on 01625 374717 and the Library staff will be happy to help with any bookings, renewals or queries.

The computers are available to book in advance and you can book an appointment if you wish to apply for a blue badge, bus pass or send benefits evidence.

Disley Library is looking forward to when it can recommence Rhymetime, Baby Bounce and Lego sessions. Until then, there are lots of children's stories and activities on their Facebook page at: www.facebook.com/disleylibrary.

Library e-resources have been updated too. Check out BorrowBox Library on the Cheshire East Libraries website at: www.cheshireeast.gov.uk/libraries for a great selection of e-books and e-audiobooks available for free with library membership.



Lyme still standing

With days getting longer and restrictions beginning to ease, our neighbours at NT Lyme have kindly provided an update on the estate.

Having sustained serious financial losses, as well as suffering multiple redundancies, the estate opening hours will not yet be able to extend later into the evening. Pre-booked tickets remain essential but an earlier 9.00am to 9.30am slot has been introduced to increase capacity and ease congestion on the A6. The gates will be opening from 8.30am for local visitors. Unfortunately, Crow Wood playscape remains closed as extensive repair work is needed to make the space safe after being out of use. Lyme will be trying to get some of the repairs undertaken and will keep everyone informed.

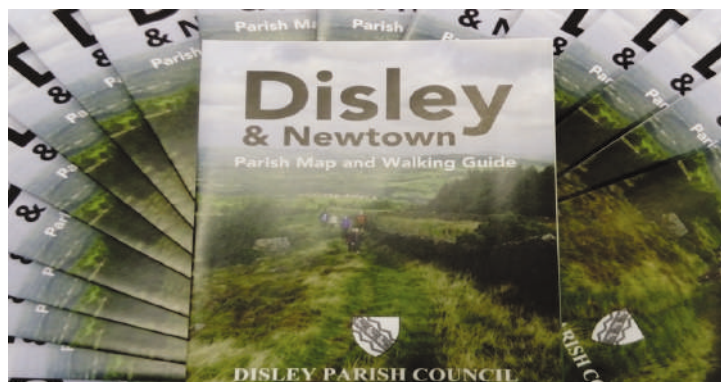
The Dogs on Leads policy, updated from 12th April, asks for dogs to be kept on leads during the bird nesting season, with an off-lead, close control, area available in Knightslow Wood until further areas are opened from 1st August.

In line with Government guidance, retail and outdoor seating for food and drinks is now on offer; more toilets will be opening and, from 17th May, the house will be welcoming visitors. Lyme also hopes to welcome back outdoor group activities, such as Park Run, towards summer.

NT Lyme is aware that anti-social parking around its entrances has become more regular, particularly during busy periods, and is working with concerned residents to mitigate these issues with temporary solutions such as cones and signs where there are permissions to do so. Unfortunately, there are restrictions that prevent this being done on all affected roads.

The Cheshire East Transport Delivery Plan includes a proposal to introduce parking restrictions on the A6 near the entrance to Lyme; the National Trust is supportive of this proposal and is in conversation with Disley Parish Council, Cheshire East Council, Cheshire East Highways, Cheshire Constabulary, Transport for Greater Manchester and our local MP to discuss further solutions.

Please visit the Lyme website for the latest updates at: www.nationaltrust.org.uk/lyme



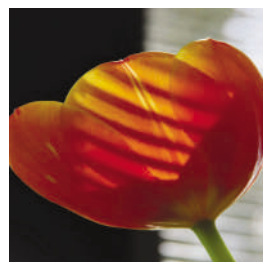
A Map for all Seasons

Disley Parish Council is pleased to announce the availability of an updated Disley & Newtown Parish Map and Walking Guide which contains 7 walks including 2 new ones. All walks have been tried and tested by enthusiastic volunteers and range from gentle strolls to tougher rambles.

During the various lockdowns in 2020, the Parish Paths Map and Walks proved to be extremely popular with residents and visitors alike. People have been delighted to discover new walks close to home and have taken pleasure in exploring the numerous footpaths across Disley and Newtown.

If you would like to experience these enjoyable walks for yourself, the Disley & Newtown Parish Map and Walking Guide is available to buy from the Disley Parish Council office, Disley Library, Fountain News and the Bohemian Bus. The individual walks can also be downloaded from the Parish Council website www.disleyparishcouncil.org.uk.

Through Daisy's lens



The Disley News's official young photographer, Daisy Roberts, has had to be shielding throughout the pandemic, which has restricted her opportunities to get out and about around the village. However, as these fantastic, and wonderfully colourful, images show, if you have a keen eye and a talent for composition, you don't have to venture further than the end of the garden to capture some great pictures. Many thanks to Daisy for sending these in and we hope that she and her family will soon be able to travel further afield.






CREATIVE
framing

**Picture Framing
Re-Framing
High Quality Photo Printing
Framed Memorabilia**

**Free collection & Delivery
No Obligation Quotes**

1 Buxton Road, Disley.

 **01663 308206**

naughtydogcreative.com




Disley Parish Council is keen for residents to get to know a bit more about their local Parish Councillors and what motivates them. Parish Councillors are elected every four years to represent the views of all sections of the community. They are expected to act in a fair, honest and selfless manner and do not receive any payment for their time.

Meet your Councillors

Cllr. Dominic Hutchins

In this edition we are meeting Cllr. Dominic Hutchins who was elected to the Council in May 2019 and is involved in the Council's Village Health & Well-being and Leisure Facilities project teams.

What did you/do you do for a living?

I'm a Youth and Community Worker with an interest in YOTs. (Youth Offending Teams)

Do you have a family, pets etc.?

My family live in New Mills and I've three brothers, one who now lives in Bedford. I've a dog called Gracie who is named after my late Nan.

What are your hobbies and interests?

I am a keen skier, enjoy travel and in the last couple of years I have taken up Stand Up Comedy. I recently came 2nd place in a competition at the Frog and Bucket for new comics.

What made you want to become a Parish Councillor?

To help my community and encourage other disabled people into politics.

What are the best and worst things about being a Parish Councillor?

The best thing is getting to know the community and the worst thing is having to chase up Cheshire East Council.

What is the best thing about living in Disley and Newtown?

The people and welcoming community.

If you could change one thing about the village, what would it be?

It would have to be the A6 and the levels of pollution.

Carry on planting



The Disley PRIDE volunteer group has joined forces with Disley Parish Council during lockdown to keep the village looking bright and colourful. PRIDE was set up in 2001 to enhance the local environment by planting flowers and bulbs throughout the village each year, as well as undertaking special restoration projects. The flower displays around the Community Centre, village entrances, troughs and planters add to the hanging baskets and planter at Fountain Square provided by the Parish Council.

Over the years PRIDE, which is self-funded, has raised several thousand pounds from events and donations to buy plants for both summer and winter planting. With lockdown putting a stop to community fundraising, PRIDE is grateful to the Parish Council for its continued commitment to provide funding for its activities. PRIDE is also very grateful for a recent generous donation from local roofing contractor, Gary Timlin Roofing. These funds will ensure that PRIDE can carry on putting some much-needed colour into Disley and Newtown. The Group is always on the lookout for new volunteers and thanks go to all those who responded to an SK12 Facebook call for help with the autumn planting at the end of last year.

Anyone keen to volunteer for one-off help or to join the group can link with Sue Jones on SK12.

Summer planting is fast approaching and help will be needed around the beginning of June.



Disley & District PROBUS



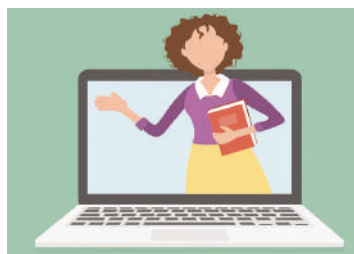
Are you a gentleman who has recently retired or semi-retired and is looking for ways to fill your time? Are you interested in discovering new information and items of interest?

If so, why not consider joining Disley & District PROBUS, an informal group of retired gentlemen who meet on a regular basis for convivial fellowship and the opportunity to learn about a diverse range of subjects.

The group meets in Disley Community Centre on the second and fourth Monday morning of each month, or (during COVID restrictions) on-line for about two hours, to hear fascinating lectures on a variety of subjects. This is followed by lunch at a suitable local hostelry for those who wish to socialise. On the other Mondays, non-strenuous walks are often arranged around the area to provide exercise in the company of like-minded friends. Four times a year, a lunch is arranged for members and partners, to cement the relationships.

Membership is very reasonable at £55 per year to cover all the speakers.

For more information, or to apply for membership, please contact Bob Harrison on 01663 732649.



Disley Primary gets IT!

Disley Primary School received four fully refurbished laptops courtesy of the Poynton Area Community Partnership (PACP) recently. The Partnership had identified a need for IT in the area, particularly to assist students who were studying at home during the pandemic. Many students continue to have difficulties with their home studies due to inadequate hardware or having to share devices with other members of their household. The provision of the laptops came about as a result of a partnership between the school, the Parish Council and the PACP and a further laptop donation is due to be made shortly.

Mrs. Taylor, Head of Disley Primary, said, "We were thrilled to receive the laptops and want to pass on our thanks to everyone who was involved in the decision to distribute them to local schools. They will be put to very good use at Disley School and there will be families who will continue to need to use technology to access learning from home for some time to come."

The PACP works to make Poynton and its surrounding parishes attractive places where people want to visit, live, work and spend their leisure time. Voluntary groups and organisations in Disley can apply to the PACP for grants by visiting:

www.poyntontowncouncil.gov.uk/poynton-area-community-partnership

Disley Hardware & Keys



Wild bird food, pet treats, toys, bags, mops, brushes, nails, pliers, garden products etc.

**34 Market Street
Disley**

01663 611242

Monday to Saturday from 9.00am to 5.30pm

"For much more than hardware and keys"

We would like to thank all our customers for their support during the Coronavirus pandemic. We wish everyone well and hope to see you soon.



WANTED!

YOUR LOW MILEAGE, ONE OR TWO OWNER CAR, ESTATE, MPV OR SMALL/MEDIUM VAN WITH SERVICE HISTORY

FINANCE SETTLED

THOUSANDS OF SATISFIED CUSTOMERS



HIGH LANE GARAGE

ESTABLISHED 1927

WE'RE OPPOSITE THE RED LION

📱 www.highlanegarage.co.uk

✉ Email: peter.murrayhlg@gmail.com

☎ **01663 763355/ 764566**

📍 111-113 Buxton Road, High Lane Village, Stockport SK6 8DX





Putting the maps on Disley Station

A joint venture between the High Peak & Hope Valley Community Rail Partnership, National Trust Lyme, Disley Parish Council and the Friends of Disley Station has seen three new, illustrated maps be installed at Disley Station.

The colourful and informative maps show walks and many places of interest which are all easily accessible from Disley Station.

The project was led by Rob Fryer who was delighted to see the panels finally installed after many tweaks, amends and input from all partners. The panels are a fantastic addition to Disley Station and provide a welcome point of information for all visitors and highlight all there is to see and do in Disley.

The station (and the panels) are a great starting point to find out more about the village's fascinating past and venture into historic Lyme.

WI, oh WI!



Disley WI have been meeting remotely during the pandemic. For the first few months each member received a challenge "meeting in a bag". The bag contained different tasks ranging from Swedish weaving, puzzles, a treasure trail around Disley and bunting describing members' lockdown experiences.

Since December, meetings have also been held using Zoom and various speakers have shared with members, Travels around Europe in a 2CV, Wildlife to look out for in Manchester and How to write a 99-word story. While the ladies are very much looking forward to face-to-face meetings, they are planning cautiously to ensure every member feels safe. Disley WI will be back in the community centre on the 4th Monday of the month when restrictions allow but may continue with blended meetings where members can watch the speaker in the comfort of their own home should they want to. One of the first events will be an outdoor picnic providing an opportunity to catch up with friends who have been very much missed during 2020.

Membership of the WI costs less than £1 a week and is open to all women over 18. Disley WI offers a monthly meeting plus the option to join a number of different sub-groups such as gardening, book group, theatre club etc. Most importantly, members are offered a place to make new friends and receive support when times are tough. To find out more, contact Disley WI by email on DisleyWI@yahoo.com or ask to join their private Facebook group.



Schoolhouse Surgery

A message from Dr. Andrew Maurice

"It probably goes without saying, but it has been a challenging year on so many different levels. Nobody could have predicted the impact of the pandemic on every aspect of our lives, not least the provision for healthcare locally.

Whilst there are likely to still be some bumps in the road, the path to a return to something resembling normal looks more promising. First a few words of gratitude:

Thank you...

...for everyone's patience and support with all the changes that have been necessary over the last year.

It has not always been possible to communicate the reasons for every alteration in the service, but I am grateful for the trust and understanding that we had sought to consider the implications of every decision.

...for respecting and tolerating the switch to mostly virtual consultations, to limit the risks of COVID transmission from face to face interactions. The Schoolhouse Surgery has remained a hive of activity over the last year - accommodating lots of staff conducting telephone, video and traditional consultations when required.

We have also used the opportunity to make some long overdue improvements to the building. Whilst the curtains, the carpets and the soft furnishing added to the ambience of the Surgery, they contravened numerous infection control rules and would have led to us breeching any formal inspection. We have new flooring, new blinds, new chairs and completely refurbished nursing rooms making the Schoolhouse Surgery fit for the future.

...for helping us to help you, by making the journey to Poynton or Bollington, when necessary. This includes for nursing appointments or an urgent consultation with a GP. As some of you will be aware Health Care Assistant appointments have been happening in Disley for some time and as we head into the summer the new nursing rooms will be gradually brought back into service.

There will still be occasions when a trip to a neighbouring village will be necessary, perhaps to receive care from a colleague with a particular interest or receive your second COVID vaccination, and again I hope this will continue to be gratefully received.

...to those of you that have consented to having your consultation with a GP registrar recorded for training, education and assessment purposes. The pandemic led to the cessation of all professional face to face examinations and the Royal College of General Practitioners (RCGP) needed to act quickly to ensure trainees were still able to progress to become fully qualified (and prevent an even worse workforce crisis). Hence some of trainee GPs need to record quite a number of their consultations and submit them (with the tightest security and confidentiality) to the RCGP to gain the necessary accreditation. Without your kind consent our lovely registrars would not be able to progress with their careers.

...and finally, for the wonderful messages of support that have come into the Practice over the last year - they have been extremely gratefully received. The Schoolhouse Surgery is in better shape, better condition and more resilient than it has been for many years. We now have three Middlewood GP Partners based at SHS. Local residents can safely look forward to a bright future for healthcare in Disley."



Heyday Disley

Artisan Florist & Grower
Sustainable floristry

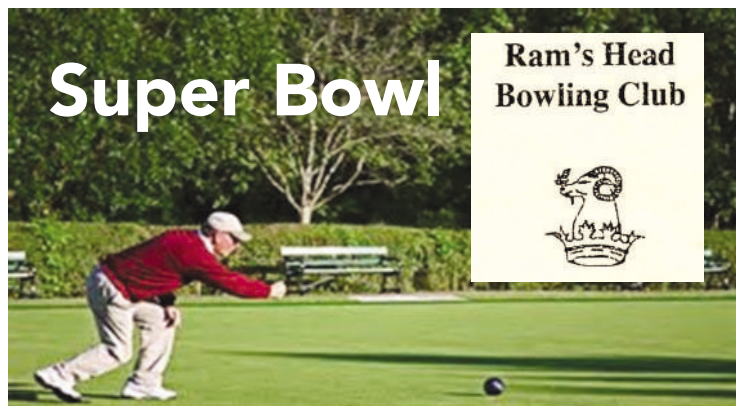
Subscriptions, weddings,
events, seasonal
products

@heydaydisley
heydaydisley@gmail.com
07411252017



Super Bowl

Ram's Head Bowling Club



The Ram's Head Bowling Club, after a year away from the green due to Covid 19, will re-start the bowling season in May. If you would like some gentle exercise in a social environment, perhaps bowling could be for you. Play outside in the fresh air and enjoy the greens which are in a beautiful setting in the heart of the village. The Ram's Head Bowling Club would like to welcome new members, both male and female, of all ages. Matches take place from May until the end of September in the evenings and also in the afternoon for over 60's. Bowling has both psychological and physiological benefits for those taking part.

Bowls truly is the sport for all, regardless of age, gender or physical ability. If you have never bowled before, do not worry, it is a sport that takes just seconds to learn. Should you wish to try your hand, a warm welcome will be made by existing club members who can 'show you the ropes'.

Interested? The Bowling Club would love to see you. Please wear flat shoes and bowls will be provided. There will be hand sanitiser available and social distancing adhered to so that all precautions are in place.

Please telephone: David Twigg on 07712 649822 or Kevin Breegan on 07525 614473 for more information.

Disley Friends of Cancer Research is looking for help

Do you have any time to spare? Could you help to organise local fundraising events or give a donation to this fantastic charity? Disley Friends of Cancer Research U.K. has been raising funds in the village for Cancer Research for 40 years. During this time, a dedicated group of volunteers has collected many thousands of pounds and does not want to give up the fight against cancer until the battle is finally won.

For more information on how you could get involved or just to find out more about Cancer Research U.K. please contact Graham Lambert on 01663 766630 or Diane Guy on 01625 783 866. They would be very pleased to hear from you.



The Disley News is again asking eagle-eyed readers to look at the photo and try and answer the simple question, 'where's that?' The answer is in Contact Details box below (no peeking). There are no prizes I'm afraid, just the satisfaction of knowing that you know the hidden corners of the village inside out. Good luck!

Owing to uncertainty regarding Coronavirus restrictions, the Parish Office opening times may vary at present. Please check on the Council website for up-to-date information.

Please note the deadline for submissions for the Autumn Edition of the Disley News is Friday 23rd July 2021.

Please email all articles, adverts and photos to:
admin@disleyparishcouncil.org.uk

Councillor contact details

Disley Parish Council

Cllr. Sue Adams 01663 765006

sue.adams@disleyparishcouncil.org.uk

Cllr. Cath Birchall 01663 765479

cath.birchall@disleyparishcouncil.org.uk

Cllr. Steve Birchall 01663 765479

steve.birchall@disleyparishcouncil.org.uk

Cllr. Simon Brownbill 07714 458126

simon.brownbill@disleyparishcouncil.org.uk

Cllr. Dominic Hutchins 01663 746366

dominic.hutchins@disleyparishcouncil.org.uk

Cllr. Jackie Pattison 01663 765254

jackie.pattison@disleyparishcouncil.org.uk

Cllr. Jean Windsor 01663 611712

jean.windsor@disleyparishcouncil.org.uk

Cheshire East Council

Cllr. Brendan Murphy 01663 763120

brendan.murphy@cheshireeast.gov.uk

Clerk Richard Holland 01663 762726

Disley Parish Council Offices

Disley Community Centre, off Buxton Old Road, Disley
Cheshire SK12 2BB Telephone: 01663 762726

Email: admin@disleyparishcouncil.org.uk

Website: www.disleyparishcouncil.org.uk

Twitter @DisleyPC

Cheshire East Council

Telephone: 0300 123 5500 www.cheshireeast.gov.uk

Cover photos kindly provided by Steve Brown, Lee Garnett,
David Higton, Paul Richardson and Jean Windsor.

*The answer to the 'Where's That?' photo is, the bottom of footpath 9 which leads up from Hagg Bank Lane to Ridgeway.

Disclaimer

Disley Parish Council do not necessarily agree with the views expressed by contributors to this publication and do not accept any responsibility for any errors in the transmission of the subject matter of this publication. All advertisements are included in good faith and Disley Parish Council cannot therefore accept any responsibility for services offered by advertisers.

